



SHEE LINE

Power Supply Cord
Manufacturer & Exporter



TAIWAN / PSE TYPE



SL-1 (NEMA 1-15P)
 VFF 0.75~2.0mm²/2C
 VCTFK 0.75~2.0mm²/2C
 VCTF 0.75~2.0mm²/2C



SL-1G
 VCTF 0.75~2.0mm²/3C



SL-1L (NEMA 1-15P)
 VFF 0.75~2.0mm²/2C
 VCTFK 0.75~2.0mm²/2C
 VCTF 0.75~2.0mm²/2C



SL-1LA (NEMA 1-15P)
 VFF 0.75~2.0mm²/2C
 VCTFK 0.75~2.0mm²/2C



SL-2 (NEMA 5-15P)
 VCTF 0.75~2.0mm²/3C
 VCT 0.75~2.0mm²/3C



SL-3 (IEC 60320 C13)
 VCTF 0.75~2.0mm²/3C



SL-8 (IEC 60320 C7)
 VCTFK 0.75 mm²/2C
 VFF 0.75 mm²/2C
 VCTF 0.75 mm²/2C



SL-1R (NEMA 1-15R)
 VFF VCTF 0.75~1.25mm²/2C



SL-12 (IEC 60320 C5)
 VCTF 0.75mm²/3C



SL-23+SL-203
 VCTF 2.0mm²/3C



SL-202 (NEMA 6-20P)
 VCT 3.5mm²/3C
 VCTF 1.25~2.0mm²/3C



SL-205 (NEMA 5-15P)
 VCTF 0.75~2.0mm²/3C
 VCT 0.75~2.0mm²/3C

US / CANADIAN TYPE



SL-1 (NEMA 1-15P)
 SPT-1, SPT-2 18AWG/2C
 SPT-1, SPT-2 16AWG/2C (Non Integral)
 HPN 18AWG/2C



SL-1P (NEMA 1-15P)
 SVT 18AWG/2C SJT 16AWG/2C
 SJT 18AWG/2C SJT 14AWG/2C
 (Non Integral)



SL-2 (NEMA 5-15P)
 SVT 18AWG/3C
 SJT,SJTW,SJTO,SJTOW 18~12AWG/3C
 ST,STW,STO,STOW 18~16AWG/3C



SL-7 (NEMA 5-15R)
 SVT, SJT 18AWG/3C(SHIELDED)
 SJT 16~14AWG/3C



SL-22 (Hospital Garde Plug)
 SJT, SJTW, SJTO, SJTOW 18~14AWG/3C



SL-205 (NEMA 5-15P)
 SVT 18AWG/3C
 SJT,SJTW,SJTO,SJTOW 18~12AWG/3C
 ST,STW,STO,STOW 18~16AWG/3C



SL-206 (NEMA 6-15P)
 SVT 18AWG/3C
 SJ, SJT, SJTW, SJTO, SJTOW 18~12AWG/3C



SL-207 (NEMA 6-20P)
 SJ, SJT, SJTW, SJTO, SJTOW 16~12AWG/3C



SL-208 (NEMA 5-20P)
 SJ, SJT, SJTW, SJTO, SJTOW 16~12AWG/3C



SL-515P (NEMA L5-15P)
 SJT, SJTW 16~14AWG/3C



SL-520P (NEMA L5-20P)
 SJ, SJT, SJTW, SJTO, SJTOW 12AWG/3C



SL-520R (NEMA L5-20R)
 SJ, SJT, SJTW, SJTO, SJTOW 12AWG/3C

US / CANADIAN TYPE 



EUROPEAN TYPE    



SL-8P
NI-SPT1, NI-SPT2 18AWG/2C
SPT1, SPT2, 18AWG/2C



SL-5 (CEE7-XVI)
H03VVH2-F 0.75mm²/2C
H05VVH2-F 0.75mm²/2C



SL-6 (CEE7-VII)
H05VV-F 0.75~1.5mm²/3G
H05RN-F 0.75~1.0mm²/3G



SL-530P (NEMA L5-30P)
SJ, SJT, SJO, SJTW, SJTO, SJTOW 12AWG/3C



SL-9 (CEE7-VII)
H05VV-F 0.75~1.5mm²/3G
H05RN-F 0.75~1.0mm²/3G



SL-10 (CEE7-XVII)
H03VVH2-F 0.75mm²/2C
H05VVH2-F 0.75mm²/2C
H03VV-F 0.75mm²/2C
H05VV-F 0.75~1.0mm²/2C



SL-620P (NEMA L6-20P)
SJT, SJTW, SJTO, SJTOW 14~10AWG/3C



SL-21
H03VV-F 0.75mm²/3G
H05VV-F 0.75~1.5mm²/3G



SL-17 (I M Q) Italy Plug
H05VV-F 0.75~1.0mm²/3G



SL-T520R (NEMA 5-20R)
SJT, SJTW, SJTO, SJTOW 16~12AWG/3C

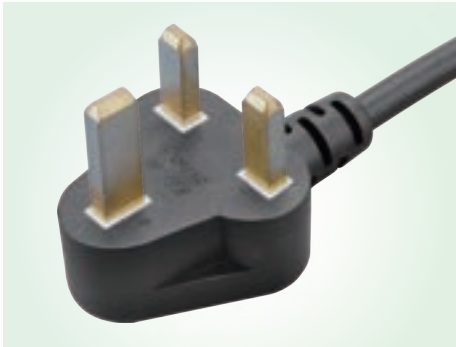


QP-022 Swiss plug
H05VV-F 0.75~1.5mm²/3G



QP-026 (BS1363)
H03VVH2-F, H05VVH2-F 0.75mm²/2C
H03VV-F 0.75mm²/3G
H05VV-F 0.75~1.5mm²/3G
H05RN-F 0.75~1.0mm²/3G

OTHERS



SL-A01 (British Regions Using)

H03VV-F 0.75mm²/3G
H05VV-F 0.75~1.5mm²/3G
H05RN-F 0.75~1.0mm²/3G



SL-A03 (For Use In South Africa)

H03VVH2-F, H05VVH2-F 0.75mm²/2C
H05VV-F 0.75~1.5mm²/3G
H05RN-F 0.75~1.0mm²/3G



SL-16 (SAA)Australia Plug(AS/NZS 3112)

H03VV-F 0.75mm²/3G
H05VV-F 0.75~1.5mm²/3G
H05VVRN-F 0.75~1.0mm²/3G



SL-15 (SAA)Australia Plug(AS/NZS 3112)

H03VVH2-F 0.75mm²/2C
H05VVH2-F 0.75mm²/2C
H05VV-F 0.75~1.0mm²/2C



QP-012 (For Use In China)

H03RVV-F 0.75mm²/3G
H05RVV-F 0.75~1.5mm²/3G



SL-31 (IEC 60320 C17)

SVT 18AWG/2C
SJT, SJTW, SJTOW 18~14AWG/2C
H05VV-F 0.75~1.5mm²/2C



SL-26A (For Use In Middle East)

H03VVH2-F, H05VVH2-F 0.75mm²/2C
H03VV-F, H05VV-F 0.75mm²/3G
H05VV-F 1.0~1.5mm²/3G
H05RN-F 0.75~1.0mm²/3G



SL-27A (For Use In India)

H03VVH2-F, H05VVH2-F 0.75mm²/2C
H03VV-F, H05VV-F 0.75mm²/3G
H05VV-F 1.0~1.5mm²/3G
H05RN-F 0.75~1.0mm²/3G



SL-31L (IEC 60320 C17)

SVT 18AWG/2C
SJT, SJTW, SJTOW 18~14AWG/2C
H05VV-F 0.75~1.5mm²/2C



Wiring with SR



Terminal type



Wiring Harness



SL-3 (IEC 60320 C13)
SVT 18AWG/3C
SJT 18~14AWG/3C
H05VV-F 0.75~1.5mm²/3G



SL-4 (IEC 60320 C14)
SVT 18AWG/3C
SJT 18~14AWG/3C
H05VV-F 0.75~1.5mm²/3G



SL-8 (IEC 60320 C7)
SPT-1, SPT-2 18AWG/2C
H03VVH2-F 0.75mm²/2C
H05VVH2-F 0.75mm²/2C



SL-11 (IEC 60320 C13)
SVT 18AWG/3C
SJT 18~14AWG/3C
H05VV-F 0.75~1.5mm²/3G



SL-12 (IEC 60320 C5)
SVT 18AWG/3C
SJT, SJTW, SJTO, SJTOW 18AWG/3C
H05VV-F 0.75mm²/3G



SL-19 (IEC 60320 C19)
SJT 16~12AWG/3C
H05VV-F 1.0~1.5mm²/3G



SL-20 (IEC 60320 C20)
SJT 16~12AWG/3C
H05VV-F 1.0~1.5mm²/3G



SL-25 (IEC 60320 C15)
SVT 18AWG/3C
SJT 18~14AWG/3C
H05VV-F 0.75~1.0mm²/3G



SL-29 (IEC 60320 C8)
SPT-1, SPT-2 18AWG/2C
H03VVH2-F 0.75mm²/2C



SL-30 (IEC 60320 C14)
SVT 18AWG/3C
SJT 18~14AWG/3C
H05VV-F 0.75~1.0mm²/3G



SL-25L (IEC 60320 C15)
SVT 18AWG/3C
SJT 18~14AWG/3C
H05VV-F 0.75~1.0mm²/3G



SL-7AD
SVT 18AWG/3C

CONVERTER PLUG ADAPTER



SL-407
IEC 320 C14 TYPE TRANS 5-15R TYPE



SL-607
EUROPEAN TYPE TRANS 5-15R TYPE



SL-1607
AUSTRALIAN TYPE 5-15R TYPE



SL-C603
IEC 320 C6 TYPE TRANS IEC 320 C13

FAN CORD



SL-F01
SPT-1 18AWG/2C
H03VVH2-F 0.75mm²/2C



SL-F03
SPT-1 18AWG/2C
H03VVH2-F 0.75mm²/2C



FAN CORD
SPT-1 18AWG/2C
H03VVH2-F 0.75mm²/2C

Y CABLE



SL-4B+(SL-3 x 2)
SVT 18AWG/3C
H05VV-F 0.75mm²/3G



SL-2+(SL-7 x 2)
SVT 18AWG/3C



SL-20+(SL-19 x 2)
SJT 16~14AWG/3C
H05VV-F 1.0~1.5mm²/3G



SL-205+(SL-7 x 2)
SVT 18AWG/3C



SL-T520R+SL-20
SJT · SJTW · SJTO · SJTOW 14AWG/3C
SJT · SJTW · SJTO · SJTOW 16AWG/3C

ASSEMBLY PLUG



SL-19A



SL-20A



NEMA 5-15P



NEMA L5-20P



NEMA L5-30P



NEMA L6-30P

CEE/IEC 60309



SL-309A-316P

16A-6H 200-250V~
(2P+E)



SL-309A-416P

16A-6H 380-415V~
(3P+E)



SL-309A-516P

16A-6H 200/346V-240/415V~
(3P+E+N)



SL-309A-332P

32A-6H 200-250V~
(2P+E)



SL-309A-432P

32A-6H 380-415V~
(3P+E)



SL-309A-532P

32A-6H 200/346V-240/415V~
(3P+E+N)



SL-309A-316R

16A-6H 200-250V~
(2P+E)



SL-309A-416R

16A-6H 380-415V~
(3P+E)



SL-309A-516R

16A-6H 200/346V-240/415V~
(3P+E+N)



SL-309A-332R

32A-6H 200-250V~
(2P+E)



SL-309A-432R

32A-6H 380-415V~
(3P+E)



SL-309A-532R

32A-6H 200/346V-240/415V~
(3P+E+N)

IEC SOCKET



IEC Socket



SL-4A

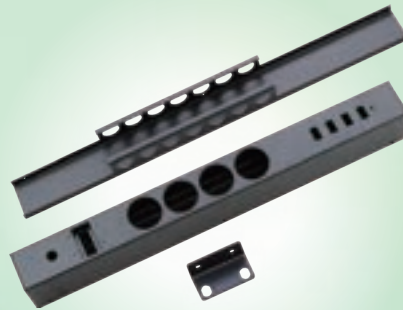


SL-3A

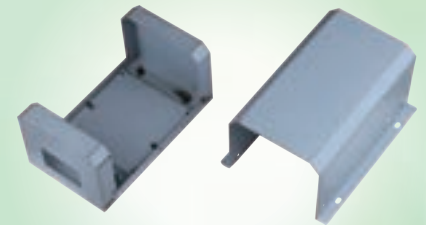
SHEET MATERIAL



電源外殼-1



電源外殼-2



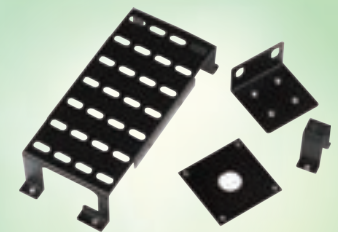
電源外殼-3



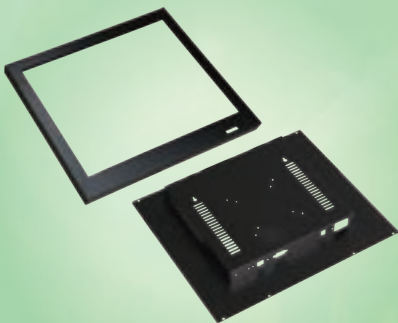
電源外殼-4



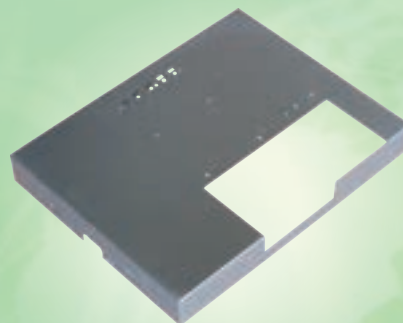
電源外殼-5



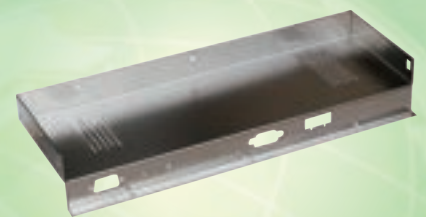
板金配件



工控螢幕外殼



鍍鋅板金件



鍍鎳板金件

PDU

R31583
RoHS



SL-A515R-08

VCTF 2.0mm² /3C
8座+三合一開關+數位錶

R31583
RoHS



SL-B515R-08

VCTF 2.0mm² /3C
8座+三合一開關+指針錶

R31583
RoHS



SL-C515R-08

VCTF 2.0mm² /3C
8座+三合一開關

R31583
RoHS



SL-E51502-0

VCTF 2.0mm² /3C
2座+三合一開關+控制面板



SL-E515R-0

8座+三合一開關



SL-E515R-L

Lock型8座+過載保護器+數位錶



SL-E520R-1

5-20R型8座+三合一開關+數位錶



SL-EC13R-1

C13型10座+三合一開關+數位錶



SL3M2U-20A

5-20R型8座+獨立開關8個+過載保護器

R31583
RoHS



SL-E314-0

電源規格：VCTF 2.0mm²/3C 1.8M
額定規格：AC 125V 15A 1650W MAX
輸出規格：1開關4插座3P

SL-E316-0

電源規格：VCTF 2.0mm²/3C 1.8M
額定規格：AC 125V 15A 1650W MAX
輸出規格：1開關6插座3P

R31583
RoHS



SL-E344-0

電源規格：VCTF 2.0mm²/3C 1.8M
額定規格：AC 125V 15A 1650W MAX
輸出規格：4開關4插座3P

SL-E366-0

電源規格：VCTF 2.0mm²/3C 1.8M
額定規格：AC 125V 15A 1650W MAX
輸出規格：6開關6插座3P



www.sheeline.com.tw

升林有限公司 SHEE LINE CO., LTD.

電話: 02-26806781

傳真: 02-26808160

Email: shle@ms13.hinet.net

238新北市樹林區新興街19巷15號



www.電源線.tw